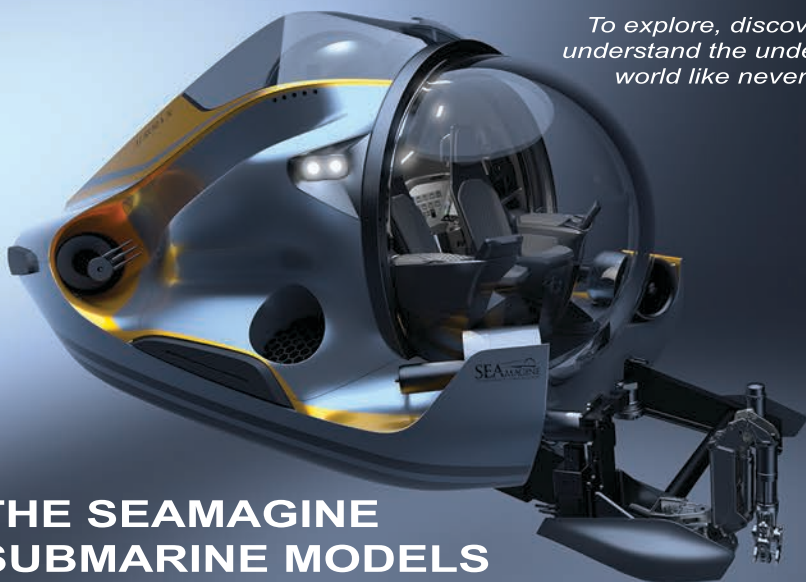




SEAMACHINE
HYDROSPACE CORPORATION

California, USA
+1 909 626-6262

*To explore, discover, and
understand the underwater
world like never before*



THE SEAMACHINE SUBMARINE MODELS

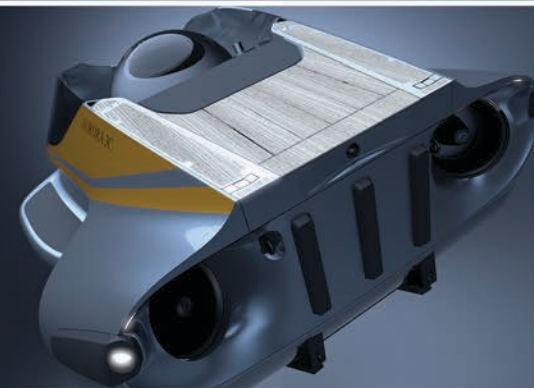
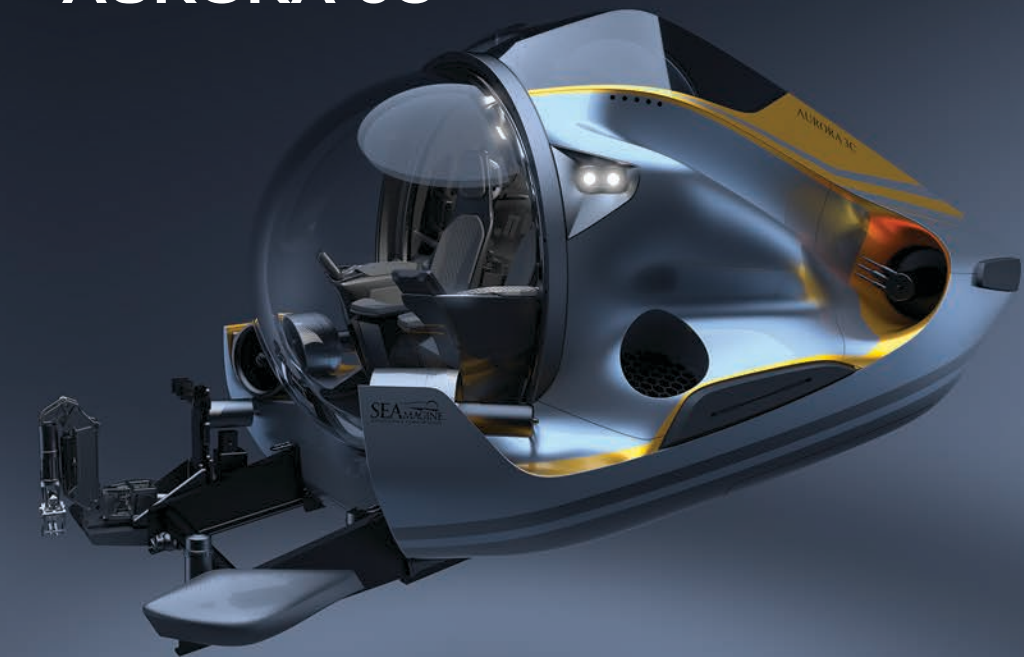
Submarines in a League of their Own:

2 to 6 Person Submarines
for Superyachts & Professionals



www.seamachine.com

AURORA-3C



3 PERSON COMPACT MODEL

Extra Large Entry Hatch

Light Weight

Excellent Field of View

Most Spacious 3 Person Cabin in Its Weight Class

Depth Rating: 457 m

Length: 4.06 m

Width: 2.34 m

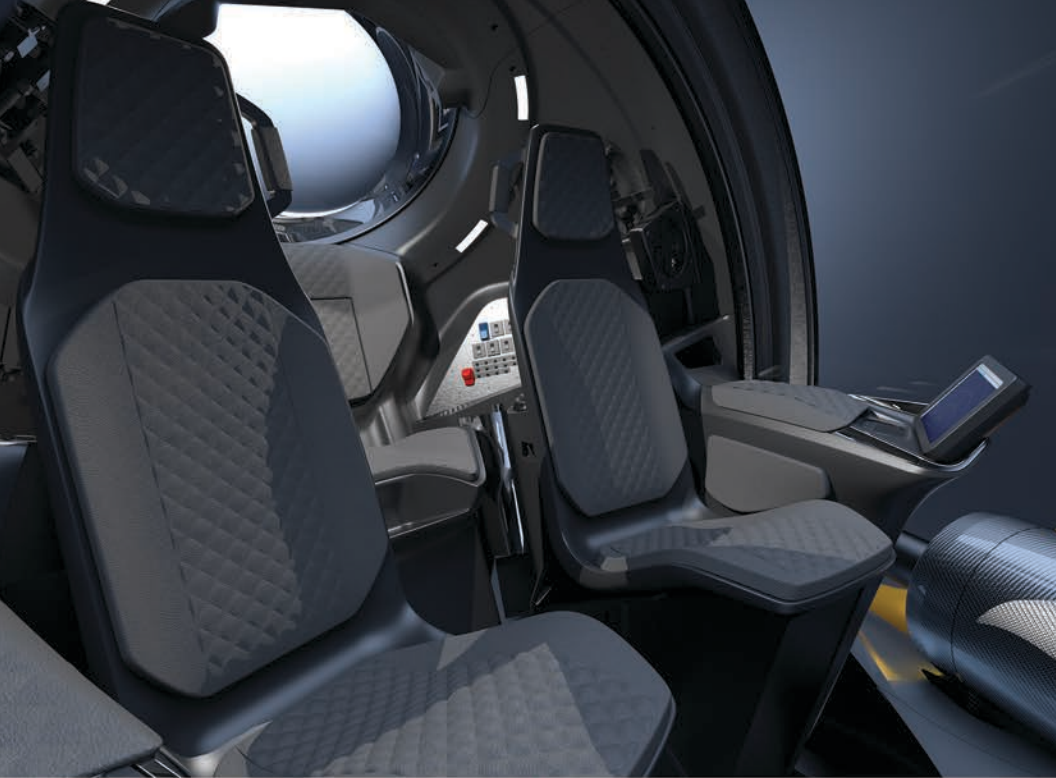
Height: 1.88 m

Weight: 3800 Kg

ABS Classed & CISR

Hoist Point Height: 1.72 m

Size and weight can be customized



Meet Aurora-3C: The Underwater Adventurer's Dream Machine

Compact and lightweight in design, this new, 3-person, ABS Closed submarine offers the most spacious interior and comfortable entry arrangement in its weight category. With a diving depth of 457 m, this model has a dry weight of only 3,800 kg and its large, front acrylic window along with the second 180-degree hemispherical window integrated into the extra large entry hatch offers passengers and the pilot an expansive field of view in all directions.

Compact in its external configuration while still spacious in its interior, this vessel has a low height and an even lower hoist point making it ideal for setup in confined spaces.



AURORA-3



3 PERSON MODEL

Deep Depth
Spacious Cabin
Unrivalled View
Large Unobstructive Hatch

Depth Rating: 300 m - 1500 m

Length: 4.36 m

Width: 2.76 m

Height: 2.27 m

Weight: 5500Kg - 7500 Kg

ABS Classed & CISR

Size and weight can be customized

AURORA-4



4 PERSON MODEL

Removeable 4th Seat
Spacious Cabin
Excellent View for All

Depth Rating: 300 m - 1000 m

Length: 4.40 m

Width: 2.76 m

Height: 2.39 m

Weight: 6700 Kg - 8000 Kg

ABS Classed & CISR

Size and weight can be customized

AURORA-5



5 PERSON MODEL

Unrivalled Maneuverability
Large Unobstructive Hatch
Spacious Cabin

Depth Rating: 300 m - 1000 m

Length: 4.37 m

Width: 2.79 m

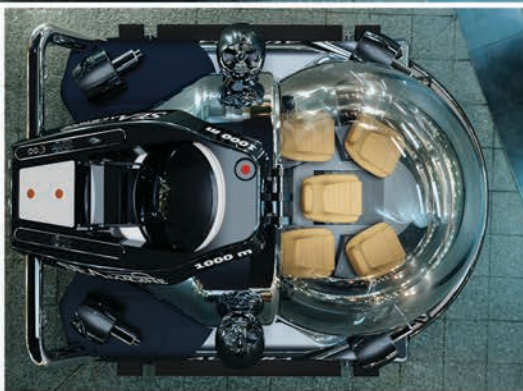
Height: 2.40 m

Weight: 7500 Kg

ABS Classed & CISR

Size and weight can be customized

AURORA-6



6 PERSON MODEL

High Comfort

Exceptional Field of Views

Safe Boarding Arrangement

Low Weight Multi-Passenger Vessel

Depth Rating: 300 m - 1000 m

Length: 4.51 m

Width: 3.30 m

Height: 2.54 m

Weight: 7500 - 9100 Kg

ABS Classed & CISR

Size and weight can be customized



OCEAN PEARL 2 PERSON MODEL

Depth Rating: 380m

Length: 4.53 m

Width: 2.44 m

Height: 2.25 m

Weight: 3,800 Kg

ABS Classed & CISR



Leading Manned Submersible Technology for Over 24 Years

SEAmagine is a California based company established in 1995 and a leading manufacturer of small manned submersibles with over 12,000 dives accumulated by its existing fleet. The company produces 2 to 6 person models of its submersibles for depths from 150 meters to 1500 meters deep. All SEAmagine submersibles are classed by the American Bureau of Shipping (ABS) and are approved by the Cayman Island Shipping Registry. SEAmagine's submersibles have been used in scientific, commercial, and superyacht sectors and have also been used in numerous film projects produced by National Geographic, BBC, and others. SEAmagine maintains a flawless safety record, has built a solid track record of reliability and practicality over the past 24 years in both the professional and superyacht markets, and has garnered an enviable reputation for reliable, top-tier support worldwide.

SEAMAGINE
HYDROSPACE CORPORATION

Los Angeles, California, USA
Tel: +1 909 626-6262

www.seamagine.com